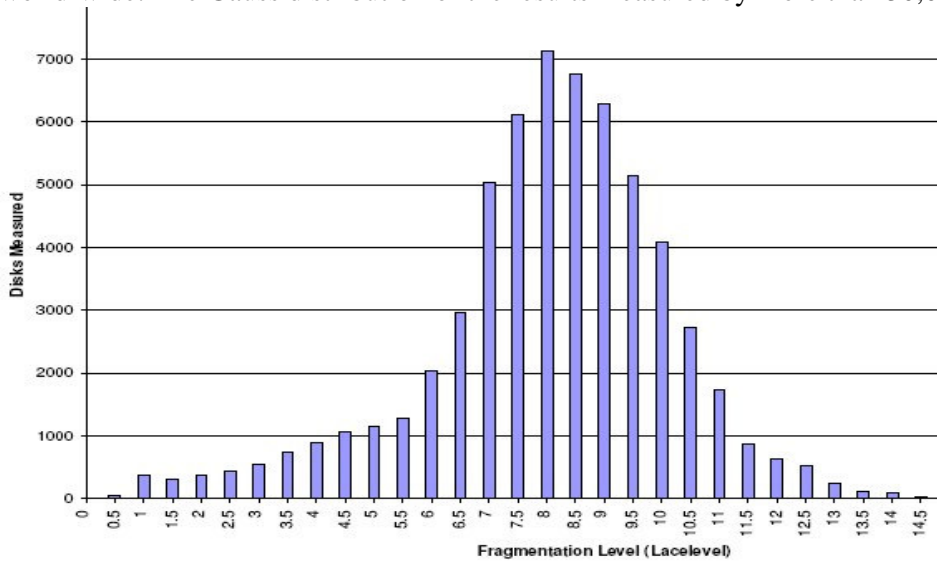


The system notifies on events at two levels:

- A report on disk-state where the fragmentation-level has crossed the threshold allotted by the operator, either through recommendation, or the user's experience. The report on an event at this level is sent to the required destination or if elected, to run an automatic remote defragmentation. In the latter case, the defragmentation is scheduled for the moment chosen by the operator.
- A report on disk-state where the defragmentation level did not improve the situation. This report denotes a significant problem with the data quality unsolved by defrag and therefore requiring professional intervention.

The technology for measurement of disorder on disks (Patent Pending) is already in use for over a year in the **Lacelevel2** software program, and is currently employed in over 250,000 computers world-wide. The Gauss distribution of the results measured by more than 50,000 users follows:



LaceWatcher PRO has been purchased and installed recently by a number of very large Israeli organizations and is already in therapeutic operation in the fields of industry, aviation, research, educational institutions and more. The DEMO program has been downloaded by more than 2000 users worldwide.

The program is offered at three levels according to the collective memory scale of all the computers monitored by the program:

- Entry Level 1 Terabyte
- Medium-size system 10 Terabytes
- Large system 100 Terabytes

The experience gained so far shows a minimal need for operator intervention, and the average Return On Investment (ROI) is calculated as less than one year.

For more details: www.disklace.com



LaceWatcher PRO

Improve performance and increase the lifespan of your computers

DISKLACE Co. Ltd. has developed a software program in the domain of **Storage** for customers who own **servers, workstations and laptop** networks that run advanced Microsoft operating systems. The purpose of the software is to present significant savings of operational expenses.

The fundamental idea behind Disklace products is the well-known fact that Computers which suffer a high level of disorder tend to begin functioning badly long before the user notices it. A lesser-known fact is that when the situation deteriorates beyond a certain threshold, the customary improvement utilities fail to achieve their purpose. In this case the organization's computer department replaces the computer despite the cost involved. Several years ago, the IDC consulting firm released a study in which the high cost of prematurely renewing computers and servers was calculated.

Disklace's flagship product in the field of establishment systems is **LaceWatcher PRO**. This product monitors fragmentation levels in computers and servers from a central point and reports on exceptional events. This takes the form of a mail notification or an alert message to the Asset Management system. This alert is sent at a stage well-in-advance of the point-of-no-return, thus enabling intervention at a time when effective improvement is still possible. The system was found to be compatible with **CA, HP** and **IBM** when the trial - carried out in co-operation with these companies - examined the program's capability of notifying about irregularities and their reception by the organizational systems which manage the necessary repair measures.

In the majority of organizations, the state of data quality is not monitored at all, corrective treatment being administered only when a problem is reported, so that the expense incurred is not accounted for by the data-quality problem. This may explain the low awareness-level in this matter.

Integrating **LaceWatcher PRO** in an organization system enables a full spectrum survey over the organization's computers from a specific, comparative angle. It permits a full perception of each and every disks' data-quality, this being a direct function of the accumulated activity level of any computer. With normal use of the program, which performs automatically without human involvement, preventive maintenance of the system's computers is carried out transparently, thereby saving skilled manpower. This is done with considerable saving on acquisition of new equipment and a reduction in the organization's computer downtime. Long-term use of the program shows a significant saving created by reducing the frequency of computer replacement, this being influenced by raising the level of availability and usability of the organization's computers.

Watching: 256.06GB, 7 disk(s), 2 station(s) Add Remove Backup Restore

Host	Volume	LaceLevel	Acquired	Alert	Sched	Us...	Load	Label
\\KOBY1	F:\ 11.72GB OLD D [NTFS]	8.3	05:58 31.12.2008	4 hrs ago 8.6	Daily	84%	697.20	Acct
\\Rx2660	C:\ 32.00GB Syspart [NTFS]	5.6	18:14 26.11.2008	34 days ago 5.6	Disabled	77%	431.20	Acct
\\KOBY1	G:\ 13.30GB MUSIC [NTFS]	86% calculating		6.0	Daily	95%	8170...	
\\KOBY1	C:\ 93.20GB [NTFS]	8.7	17:13 22.12.2008	8 days ago 8.8	Weekly	20%	174.00	
\\KOBY1	D:\ 93.10GB [NTFS]	5.2	09:30 27.12.2008	4 days ago 6.0	Daily	23%	119.60	Acct
\\KOBY1	E:\ 12.25GB Matlab [NTFS]	2.7	00:31 18.12.2008	13 days ago 6.0	Monthly	37%	99.90	Joe1
\\Rx2660	E:\ 0.49GB 054-4554919 [F...]	1.6	00:49 17.11.2008	44 days ago 9.0	Disabled	6%	9.60	USB Disk ...

History Filter by Stop Scheduler Analyze Break

Remote Volume
 Host: \\KOBY1
 Volume: G:\ 13.30GB MUSIC [NTFS]
 Acquire: Daily
 Alert at Level: 6.0 (custom) Settings Alert Setup

Next acquire: 06:06, Tomorrow \\KOBY1 : D:\ 93.10GB [NTFS]
 Calculating lacelevel...

